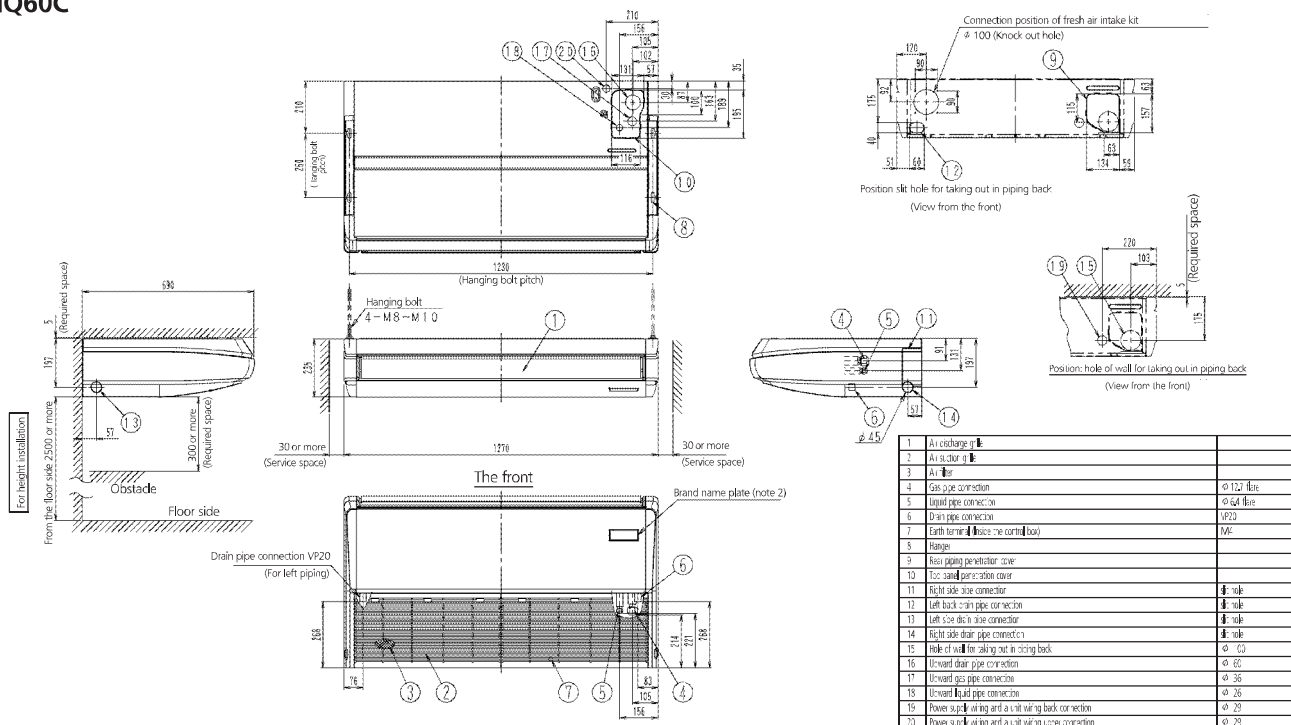


# 5 Dimensional drawings

## 5 - 1 Dimensional Drawings

### FHQ60C

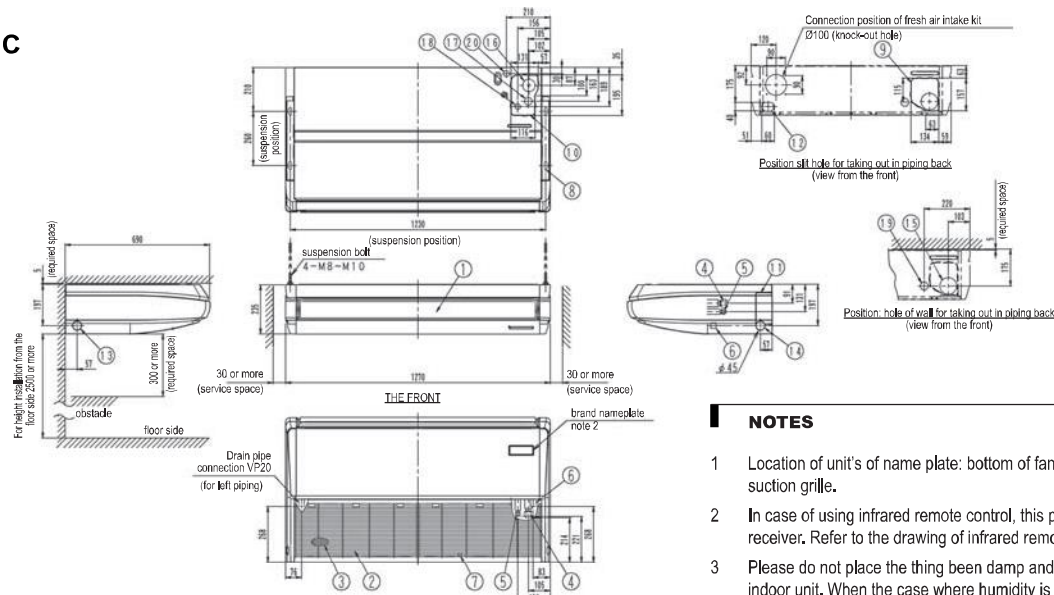


Note:

1. Location of unit's name plate: bottom of fan housing inside the suction grille.
2. In case of using infrared remote controller, this position will be a signal receiver. Refer to the drawing of infrared remote controller in detail.
3. Please do not place the thing been damp and troubled under an indoor unit. When the case where humidity is 80% or more, and the drain outlet are choked up and the air filter are dirty, dew may fall.

3D080119

### FHQ71C



3D069632A

#### NOTES

1. Location of unit's of name plate: bottom of fan housing inside the suction grille.
2. In case of using infrared remote control, this position will be a signal receiver. Refer to the drawing of infrared remote control in detail.
3. Please do not place the thing been damp and troubled under an indoor unit. When the case where humidity is 80% or more, the drain outlet are choked up and the air filter are dirty, dew may fall.

| Nr | Name  | Description |
|----|---|-------------|
| 1  | Air discharge grille                              |             |
| 2  | Air suction grille                                |             |
| 3  | Air filter  |             |
| 4  | Gas pipe connection                               | Ø15.9 flare |
| 5  | Liquid pipe connection                            | Ø9.5 flare  |
| 6  | Drain pipe connection                             | VP20        |
| 7  | Earth terminal (inside electric components box)   | M4          |
| 8  | Hanger bracket                                    |             |
| 9  | Backward piping and wiring connection opening lid |             |
| 10 | Upward piping and wiring connection opening lid   |             |

|    |  |           |
|----|--|-----------|
| 11 | Right side pipe connection                             | slit hole |
| 12 | Left back drain pipe connection                        | slit hole |
| 13 | Left side drain pipe connection                        | slit hole |
| 14 | Right side drain pipe connection                       | slit hole |
| 15 | Hole of wall for taking out in piping back             | Ø100      |
| 16 | Upward drain pipe connection                           | Ø60       |
| 17 | Upward gas pipe connection                             | Ø36       |
| 18 | Upward liquid pipe connection                          | Ø26       |
| 19 | Power source wiring and a unit wiring back connection  | Ø29       |
| 20 | Power source wiring and a unit wiring upper connection | Ø29       |